

PIGLET MORTALITY IN DANISH ORGANIC HERDS

Lena Rangstrup-Christensen, DVM, PhD Fellow

Department of Animal Science, Aarhus University, Denmark

Supervisors:

Jan Tind Sørensen & Lene Juul Pedersen



AARHUS
UNIVERSITY
SCIENCE AND TECHNOLOGY

LENA RANGSTRUP-CHRISTENSEN
DVM, PHD FELLOW

IPWC 2015
29 APRIL 2015

THE PROJECT

- ▶ **Why?** An estimated preweaning mortality between 25 and 40%
- ▶ **What?** Identifying piglet mortality risk factors in Danish organic herds
- ▶ **How?**
 1. Registrations on the piglet mortality during one year
 2. Necropsies on a sample of dead piglets

ON-FARM MORTALITY REGISTRATIONS

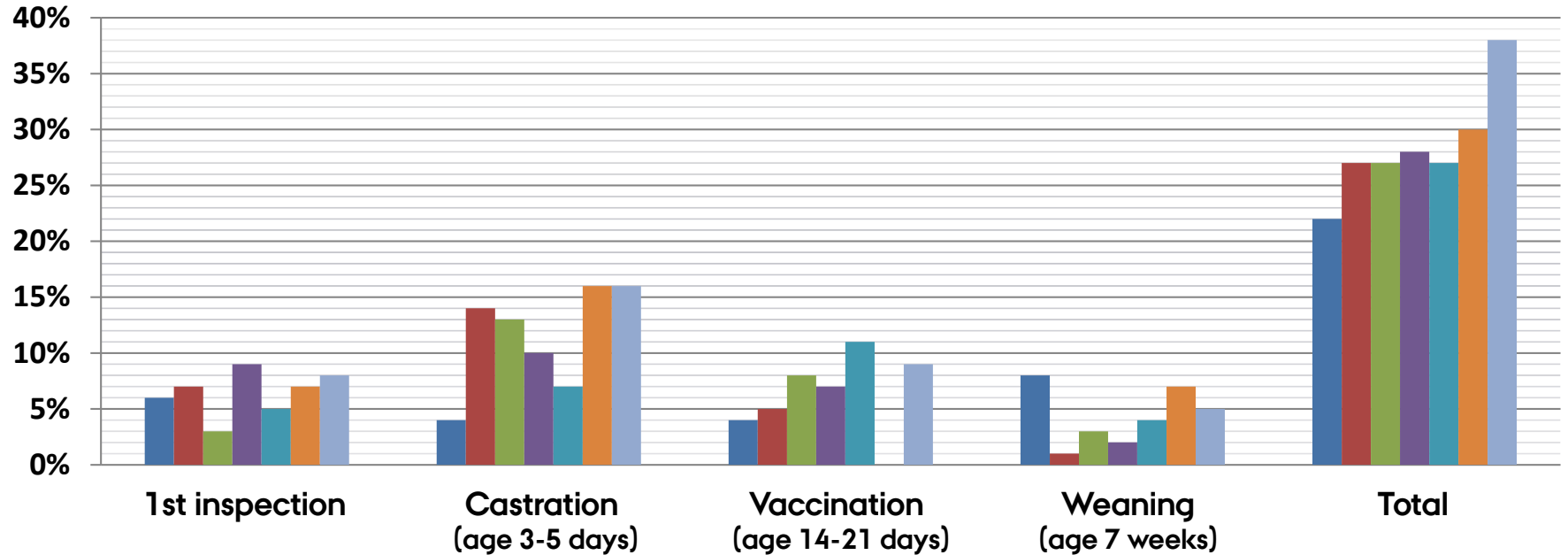
- ▶ A pocket sized booklet.
- ▶ Sows: Parity, body condition, lameness etc.
- ▶ Counting and registration of piglets;
 - 1st inspection after birth
 - Castration (or 3-5 days after birth)
 - Vaccination (or 14-21 days after birth)
 - Weaning (7 weeks after birth)
- ▶ June 2014 until May 2015.

Registrations on approximately 6000 farrowings

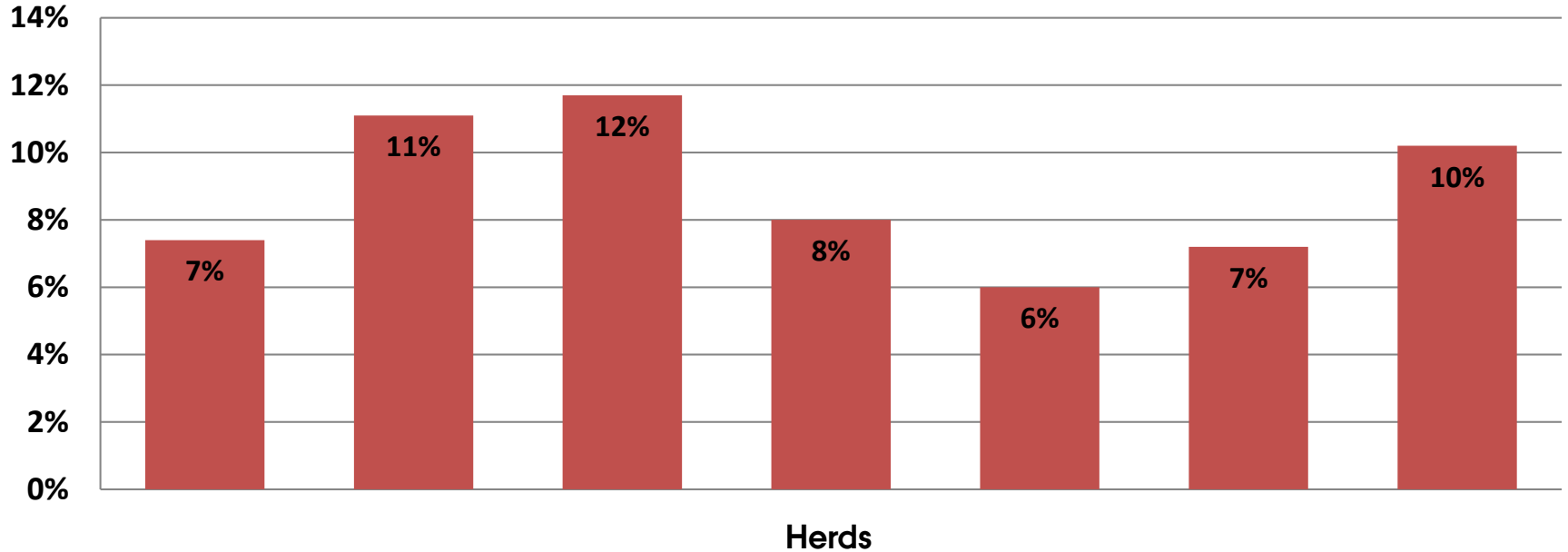
Hold:	So nr.	500	774	911	635	642	705
	Hytte	73	63	26	115	65	44
	Læg nr	5	2	1	4	4	3
	Fen nr/fælles foid						
Indsæt foremark	Dato	13/8	25/2	25/2	14/1	25/2	13/1
	Halthed (0-1) + Huld (2-4)	3	?	?	3	2	3
	Føring, dato	20/8	20/8	20/8	20/8	20/8	20/8
	1. tilsyn efter føring, dato						
Føring	Dødfødt	5	3		6	2	1
	Døde efter føring (S/A)		1	5		3	5
	Levendefødt	19	20	3	18	24	22
	Heraf små (max. 21 cm)		2			1	
Indtil kastrering	Kuldudjævning +/-	-1	-5	+9	-3	-6	
Gylte	Antal pletter	14	14	14	14	14	15
	Kastrering dato	30/8	30/8	30/8	30/8	30/8	30/8
Kastrering	Antal gris/v/start	14	14	12	14	12	13
	Alliv. efter optæl, antal						
	Evt. kuldudjævning +/-		+3			-2	-2
Førgård/vaccination	Dato	13/8	13/8	?	13/8	13/8	13/8
	Antal gris	13	13		10	12	13
Fravæning	Dato	20/10	20/10	4/10	20/10	20/10	20/10
	Antal gris frav. soen	12	11	7	10	12	13
Noter (evt suppl.)*				SUR		ol/er?	

*Lidelse: 1: Førefeber 2: yverbet, 3: ben 4: andet, Antibiotika j/n

PREWEANING MORTALITY - SUMMER 2014



STILLBORN PIGLETS – SUMMER 2014



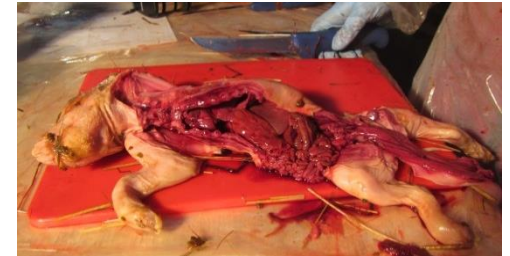
LITTER SIZE - SUMMER 2014

Herds							
Total litter size	15,90	17,62	17,58	14,73	15,71	14,90	15,07
Live born	14,72	15,66	15,53	13,55	14,77	13,83	13,54
Stillborn	1,18	1,96	2,05	1,18	0,94	1,07	1,53

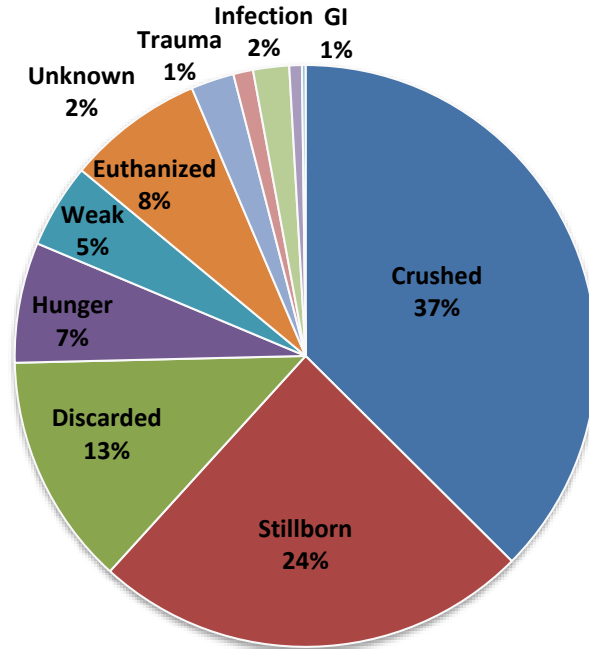
NECROPSIES

- ▶ Dead piglets from approximately 25 sows on each farm.
- ▶ 4 seasonal collection periods.
- ▶ Necropsies performed at the farms.
- ▶ Cause of death, body condition, stomach content etc.

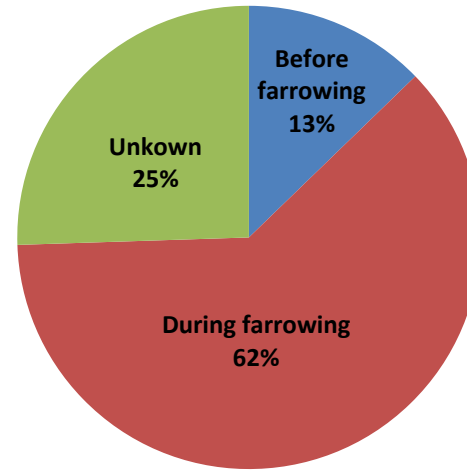
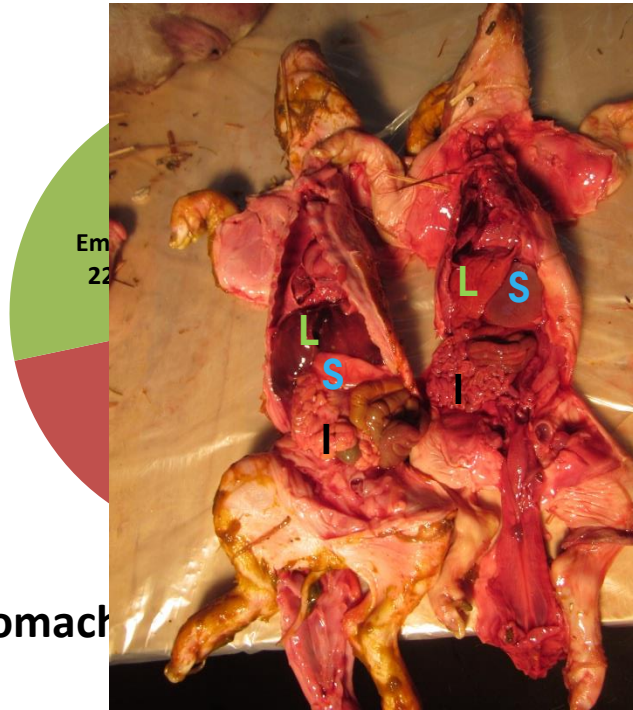
Necropsies on approximately 4000 piglets



NECROPSIES - SUMMER 2014



NECROPSIES - SUMMER 2014



Time of death - Stillborn piglets

SUMMARY PRELIMINARY RESULTS

- ▶ On farm mortality registrations – high mortality
 - › Hot summer in 2014!
- ▶ Necropsies
 - › Crushed piglets represent the largest group of diagnoses
 - › The majority of the crushed piglets had suckled before dying
 - › The majority of stillborn piglets die during the farrowing



PERSPECTIVES

- ▶ Influence of sows parity, body condition and lameness?
- ▶ Enhanced survival if born in a small rather than in large litter?
- ▶ Higher mortality in piglets with many stillborn litter mates?
- ▶ Are small piglets more prone to crushing?
- ▶ Different patterns in mortality depending on season?
- ▶ Influence of management factors such as the use of nursing sows?



THANK YOU FOR YOUR ATTENTION!

