

# CORE organic II

## Introduction and First Results



Farm specific strategies to reduce environmental impact by improving health, welfare and nutrition of organic pigs

**C. Leeb**

Amsterdam, 15<sup>th</sup> May, 2013

2<sup>nd</sup> CORE Organic II research seminar

# Background



CORE organic II



# Three Systems



CORE organic II



75 farms in 8 countries

## To identify

- animal - environment interactions in three systems

## Hypothesis

- all systems are able to ensure good welfare and low environmental impact
- when well managed



Indoor with concrete  
outside run



Partly outdoors



Outdoors

# Farm specific strategies for improvement

To develop and implement

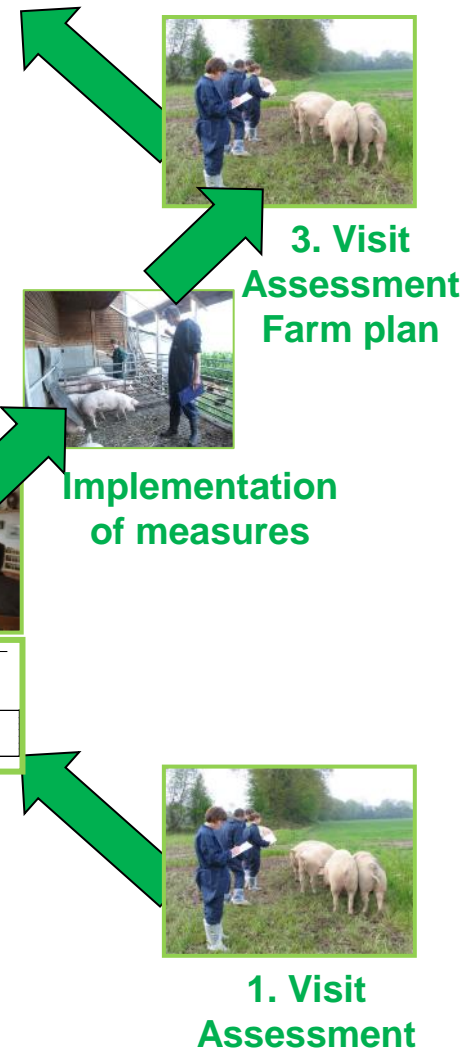
- **Farm specific strategies to:**
  - reduce environmental impacts
  - by improving health, welfare, nutrition and management of organic pigs



- To **disseminate knowledge** to national advisory bodies and farmers



CORE organic II



# Expected impact

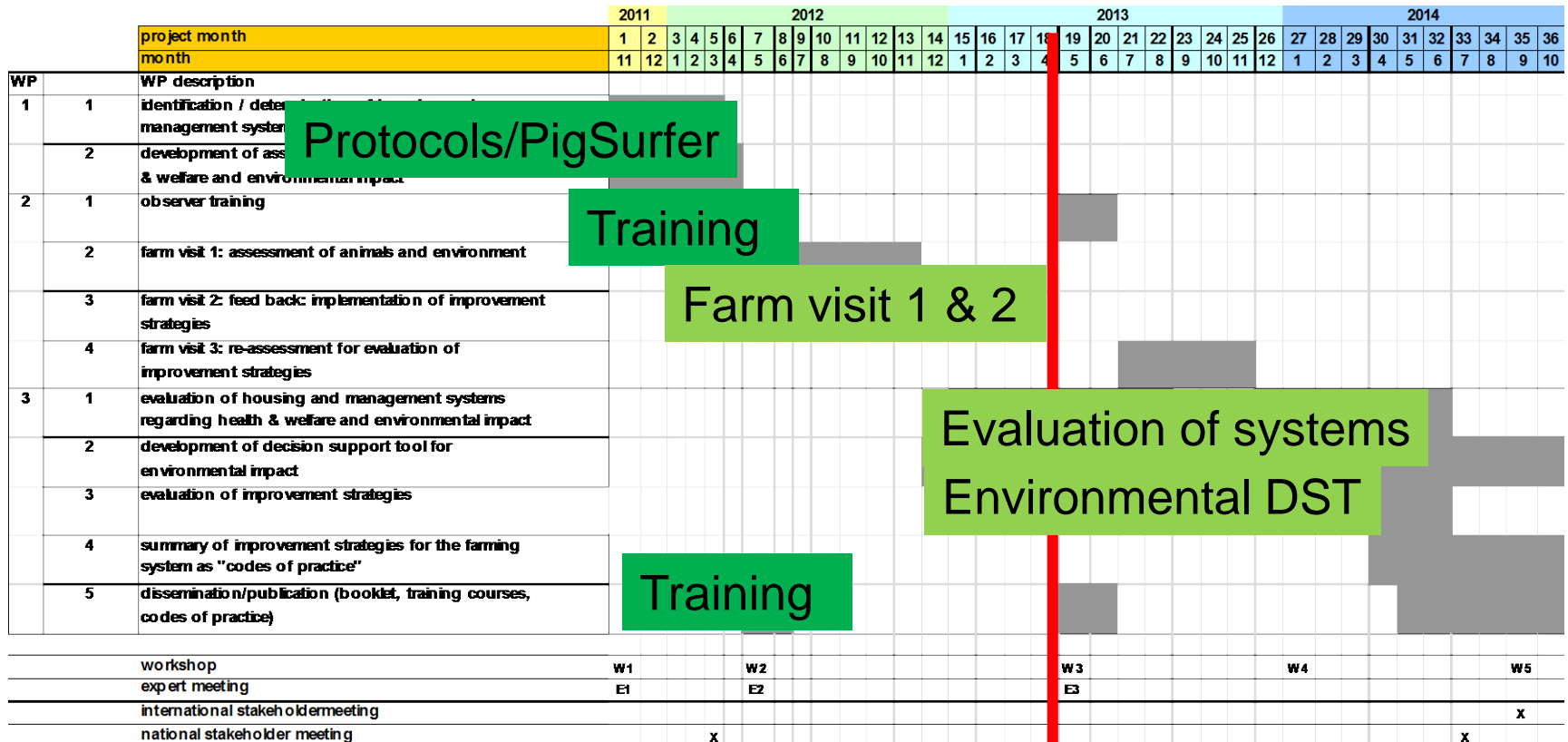


Promote sustainable development of organic pig farms towards IFOAM principles (2005)

- by providing benchmarks for health & welfare and environmental impact for different production systems (“PigSurfer”; farm planning)
- associated Codes of Practise for improvement strategies (“COPIS Health and welfare”) and “DST Environmental impact”
- As a basis to develop new and improved existing pig farming systems in future



# First Results



# WP1

# Development of Protocols



Definition of systems

Assessment protocols for

- Environmental impact
- Animal health & welfare

„PigSurfer“:

**SUR**veillance**FE**edback**R**eporting



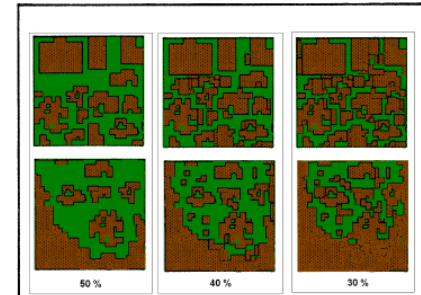
### Ectoparasites (pregnant sows, fatteners)

Count number of animals with obvious ectoparasites such as mites (Sarcoptes suis), lice (Haematopinus suis), ticks (Ixodes spp) or clinical signs in most cases combined with itchiness:

- small red dots on whole body (fresh infections in younger animals);
- crusts - usually behind ear, tail base or on lower extremities in older pigs



ProPig - Grass Cover evaluation



# WP 2 Training



CORE organic II

- Rennes (May, 2012): all
- Vienna
  - 28. -29.6. 2012: AT; DE; CH
  - 16. -17.7. 2012: CZ ;IT
- Foulum
  - 10.-12. 10. 2012: DE, DK,UK



Table 1 Clinical parameters: mean (min – max) agreement [%]

animal category	parameter	IOR 1	IOR 2
sows	N fat sows	80 (50 - 91)	88 (71 - 100)
	N thin sows	58 (40 - 73)	61 (14 - 100)
	N animals with ectoparasites	87 (45 - 100)	96 (71 - 100)
	pigs requiring hospitalisation,	99 (90 - 100)	98 (86 - 100)



# Farm visits 1



country	outdoor	indoor	in/out	Total
AT	1	12	3	16
CH	0	5	4	9
CZ	0	0	1	1
DE	0	13	3	16
DK	0	0	11	11
FR	0	0	4	4
IT	7	2	0	9
UK	9	0	0	9
<b>Total</b>	<b>17</b>	<b>32</b>	<b>26</b>	<b>75</b>



- Completed in all countries
- Feed samples taken

# Farm visits 2

Ongoing in UK and DK

Farm plans for participating farmers

- Including benchmarking

1. pregnant sows: investigating enrichment:

20% best farms				20% worst farms	Your farm on 02.05.2012 (mean based on 4 value(s))
52.5 - 41.5 %	41.5 - 38.5 %	38.5 - 34.2 %	34.2 - 27.8 %	27.8 - 11.6 %	31.2 %

- Setting goals and measures
- Soil sampling in selected farms



CORE organic II

## WP 3

- Automatic recording and feedback tool (handheld benchmarking system) = “PigSurfer”
- Currently under development:
  - “COIS”
  - Decision support tool for reducing environmental impacts



CORE organic II

# Dissemination

National courses/workshops for farmers and advisors

- **Introduction to ProPIG / Recruitment**
- **Booklet** for organic farmers/ advisors on “Codes of practice for improvement strategies” (“COIS”)
- **Decision support tool for reducing environmental impacts (“EDST”)**



# Publications

- **Decision support tool** for reducing environmental impacts
- **Effect of the three housing/outdoor systems on**
  - environmental impacts across countries and climate zones
  - health, welfare and productivity of organic European pig farms
- **Association** between animal health and welfare and the environmental impacts in the three different housing/outdoor systems
- **Improvement strategies** for health, welfare and environmental impact on organic pig farms across Europe

# CORE organic II

## Management



Amsterdam, 15<sup>th</sup> May, 2013  
2<sup>nd</sup> CORE Organic II research seminar

# Communication



- CoreOrganic2 Website
  - Would be useful to use also as internal platform to upload documents
  - Also as platform to provide info/documents after project end
- Dropbox
- Skype Meetings with WP leaders
- Telephone!! email
- Regular Workshops – at least three days



# Experiences

- What has been good and bad experiences compared to what you are used to from national or EU projects
- Very different budgets/farm numbers across countries



# Funding and Responsibilities



- Clear responsibilities and allocation of funding – should already be in proposal (different opinions, who has to do the work)
- But- also some flexibility (also across countries) necessary, if additional work seems necessary/one partner offers to carry out the work
- PhD is a good way of feeling responsible –  
Doktoral college? as idea for future

# Thank you!



CORE organic II

